

MODEL 113 Control Panel

Single phase, simplex capacitor start/run pump control.

Model 113 control panels provide a reliable means of controlling one 120, 208, or 240 VAC single phase pump requiring external starting components in water and sewage installations. Two control switches activate an IEC motor contactor to turn the pump on and off. If an alarm condition occurs, an additional alarm switch activates the audio/visual alarm system. Common applications include pump chambers and lift stations.

PANEL COMPONENTS

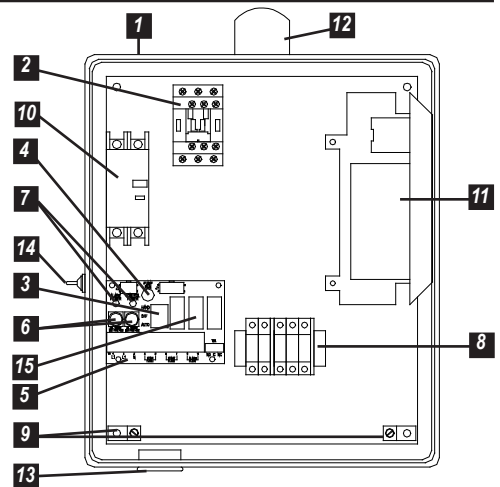
- Enclosure** measures 14 x 12 x 6 inches (35.56 X 30.48 X 15.24 cm). NEMA 4X (ultraviolet stabilized thermoplastic with removable mounting feet for outdoor or indoor use).
* Options selected may increase enclosure size and change component layout.
- IEC Motor Contactor** controls pump by switching electrical lines.
- HOA Switch** for manual pump control (mounted on circuit board).
- Green Pump Run Indicator Light** (mounted on circuit board).
- Float Switch Terminal Block** (mounted on circuit board).
- Alarm and Control Fuses** (mounted on circuit board).
- Alarm and Control Power Indicators** (mounted on circuit board).
- Pump Input Power and Pump Connection Terminal Block**
- Ground Lugs**
- Circuit Breaker** (optional) provides pump disconnect and branch circuit protection.
- Capacitor Start Module** - start/run capacitor kit must be ordered separately.

STANDARD ALARM PACKAGE

- Red Alarm Beacon** provides 360° visual check of alarm condition.
- Alarm Horn** provides audio warning of alarm condition (83 to 85 decibel rating).
- Exterior Alarm Test/Normal/Silence Switch** allows horn and light to be tested and horn to be silenced in an alarm condition. Alarm automatically resets once alarm condition is cleared.
- Horn Silence Relay** (mounted on circuit board).

NOTE: other options available.

Model 113 control panels cannot be returned. Please refer to the Product Return section.



Model Shown 1131W124X

FEATURES

- Entire control system (panel and switches) is UL Listed to meet and/or exceed industry safety standards
- Dual safety certification for the United States and Canada
- Standard package includes three 20' control switches or EZconnex® float system
- Complete with step-by-step installation instructions
- Five-year limited warranty. This express warranty does not apply to the motor start kit components. SJE-Rhombus will warranty motor start kit components supplied by SJE-Rhombus for one year. SJE-Rhombus makes no warranties of any type with respect to motor start kits supplied by a customer.



SJE RHOMBUS

PO Box 1708, Detroit Lakes, MN 56502
1-888-DIAL-SJE • 1-218-847-1317
1-218-847-4617 Fax

email: customer.service@sjerrhombus.com

www.sjerrhombus.com **B.49**

SEE BACKSIDE FOR COMPLETE LISTING OF AVAILABLE OPTIONS.

113 W 1

MODEL 113

\$874.00

ALARM PACKAGE

- 0 = select options or no alarm package..... - \$35.00
- 1 = alarm package (includes test/normal/silence switch, fuse, red light, horn & float)..... Base

ENCLOSURE RATING

- W = Weatherproof, NEMA 4X (engineered thermoplastic)..... Base

STARTING DEVICE

- 1 = IEC motor contactor 120/208/240V..... Base

PUMP FULL LOAD AMPS

- 0 = 0-7 FLA..... Base
- 1 = 7-15 FLA..... Base
- 2 = 15-20 FLA..... Base
- 3 = 20-30 FLA..... \$30.00
- 4 = 30-40 FLA..... \$50.00

PUMP DISCONNECTS

- 0 = no pump disconnect..... Base
- 4 = circuit breaker..... \$ 70.00

FLOAT SWITCH APPLICATION

- H or L = pump down or pump up (select 17 option)..... Base
- E = EZconnex® float switch system (select 33 or 34 option)
 - WITH alarm package..... - \$75.00
 - WITHOUT alarm package..... - \$50.00
- X = no floats
 - WITH alarm package..... - \$75.00
 - WITHOUT alarm package..... - \$50.00

OPTIONS *Listed below*

Start/run capacitor kits must be ordered separately (see option 12 below or call factory)

Total Options _____
TOTAL LIST PRICE _____

CODE	DESCRIPTION	LIST PRICE	CODE	DESCRIPTION	LIST PRICE
<input type="checkbox"/> 1A	Red beacon only / no audio..... <i>(must select 1E if floats included)</i>	\$15.00	<input type="checkbox"/> 16A	10' cord in lieu of 20' (per float).....	-\$2.00
<input type="checkbox"/> 1C	Horn only / no visual..... <i>(must select 1E if floats included)</i>	\$15.00	<input type="checkbox"/> 16B	15' cord in lieu of 20' (per float).....	-\$1.00
<input type="checkbox"/> 1E	Alarm float.....	\$25.00	<input type="checkbox"/> 16C	30' cord in lieu of 20' (per float).....	\$5.00
<input type="checkbox"/> 3A	Alarm flasher.....	\$45.00	<input type="checkbox"/> 16D	40' cord in lieu of 20' (per float).....	\$15.00
<input type="checkbox"/> 3B	Manual alarm reset.....	\$90.00	<input type="checkbox"/> 17A	SJE SignalMaster® / mounting strap ● (per float).....	-\$2.00
<input type="checkbox"/> 4A	Redundant off..... <i>(select option 4D if floats included)</i>	\$55.00	<input type="checkbox"/> 17B	SJE SignalMaster® / externally weighted ● (per float).....	\$5.00
<input type="checkbox"/> 4B	Red redundant off indicator & alarm..... <i>(must select 4A also)</i>	\$60.00	<input type="checkbox"/> 17C	Sensor Float® / internally weighted ▲ (per float).....	\$5.00
<input type="checkbox"/> 4D	Redundant off float..... <i>(must select 4A option) (select 17 option)</i>	\$25.00	<input type="checkbox"/> 17D	Sensor Float® / externally weighted ▲ (per float).....	\$7.00
<input type="checkbox"/> 5A	Thermal cutout/heat sensor auto reset..... <i>(for pumps with thermal switch leads)</i>	\$40.00	<input type="checkbox"/> 17E	Sensor Float® Mini / pipe clamp ▲ (per float).....	-\$2.00
<input type="checkbox"/> 5E	Seal fail circuit and indicator (2 wire).....	\$160.00	<input type="checkbox"/> 17F	Sensor Float® Mini / externally weighted ▲ (per float).....	\$5.00
<input type="checkbox"/> 6A	Auxiliary alarm contact, form C.....	\$15.00	<input type="checkbox"/> 17J	Sensor Float® / internally pipe clamp ▲ (per float).....	\$0.00
<input type="checkbox"/> 8A	Elapsed time meter.....	\$75.00	<input type="checkbox"/> 19T	TOA (Test/Off/Automatic) switch and pump run light through door mounted.....	\$75.00
<input type="checkbox"/> 8C	Event (cycle) counter.....	\$65.00	<input type="checkbox"/> 19U	HOA (Hand/Off/Automatic) switch and pump run light through door mounted.....	\$60.00
<input type="checkbox"/> 9_A	Pump overload specify amperage after number 9 followed by letter "A". Example: 912A = 12 amp pump.		<input type="checkbox"/> 19X	Door mounted pump run indicator.....	\$30.00
<input type="checkbox"/>	0-30 FLA.....	\$60.00	<input type="checkbox"/> 21A	SJE PumpMaster® in lieu of on/off switches ●.....	-\$10.00
<input type="checkbox"/>	30-40 FLA.....	\$100.00	<input type="checkbox"/> 21B	SJE PumpMaster® Plus in lieu of on/off switches ●.....	\$16.00
<input type="checkbox"/> 10E	Lockable latch.....	\$40.00	<input type="checkbox"/> 21C	Super Single® in lieu of on/off switches ▲.....	\$16.00
<input type="checkbox"/> 10F	Lightning arrestor (select pump circuit breaker).....	\$230.00	<input type="checkbox"/> 21D	Double Float® in lieu of on/off switches ▲.....	\$30.00
<input type="checkbox"/> 10K	Anti-condensation heater.....	\$100.00	<input type="checkbox"/> 33D	EZconnex® 3-Port, 25', w/10' floats (3) /pipe clamp *.....	\$268.00
<input type="checkbox"/> 11C	NEMA 1 alarm panel (must select option 6A).....	\$80.00	<input type="checkbox"/> 33E	EZconnex® 3-Port, 50', w/10' floats (3) /pipe clamp *.....	\$304.00
<input type="checkbox"/> 11D	NEMA 4X alarm panel (must select option 6A).....	\$250.00	<input type="checkbox"/> 33G	EZconnex® 3-Port, 25', w/20' floats (3) /pipe clamp *.....	\$288.00
<input type="checkbox"/> 12B	Customer supplied motor start components, mounted in enclosure by SJE-Rhombus.....	\$110.00	<input type="checkbox"/> 33H	EZconnex® 3-Port, 50', w/20' floats (3) /pipe clamp *.....	\$324.00
<input type="checkbox"/> 12C	Motor start component, mounted and supplied by SJE-Rhombus.....	Call Factory	<input type="checkbox"/> 34D	EZconnex® 4-Port, 25', w/10' floats (3) /pipe clamp, sealing plug *.....	\$343.00
<input type="checkbox"/> 14B	Main disconnect (rotary style, mounted through door, non-fused, padlockable in the OFF-position, door interlock in the ON-position) <i>(must select circuit breaker)</i>		<input type="checkbox"/> 34E	EZconnex® 4-Port, 50', w/10' floats (3) /pipe clamp, sealing plug *.....	\$388.00
<input type="checkbox"/>	0-20 FLA.....	\$450.00	<input type="checkbox"/> 34G	EZconnex® 4-Port, 25', w/20' floats (3) /pipe clamp, sealing plug *.....	\$362.00
<input type="checkbox"/>	20-40 FLA.....	\$480.00	<input type="checkbox"/> 34H	EZconnex® 4-Port, 50', w/20' floats (3) /pipe clamp, sealing plug *.....	\$407.00

● Mechanically-activated ▲ Mercury-activated * EZconnex® mechanically-activated, narrow angle float switches with quick release connections.