

# CONTROL PANEL ACCESSORIES

**Cord Seals, Hub Assembly, Simplex Installation Kit, Duplex Installation Kit, C-Level™ Simulator, 4-20mA Simulator, Sub-X™ Transmitter, Cable Connectors, Panel Mounting Post, and Riser Mounting Kit**

## CORD SEALS

Provides strain relief and a liquid-tight seal.

- Seals 1-4 cables in 2" terminal adapters
- Seals 1-6 cables in 2½" terminal adapters
- PVC plugs included (for unused cable positions)
- Ground wire

**SEAL:** neoprene

**WASHERS:** stainless steel

**NUT AND BOLT:** stainless steel

**WIRE/CABLE ACCOMMODATED:** SJOW, SJTW, 18/2, 18/3, 16/2,16/3,14/2 and 14/3



Part Number	Description
1008517	2 inch Cord Seal (1-4 Cables)
1037126	2.5 inch Cord Seal (1-6 Cables)

## C-LEVEL™ SIMULATOR

Easy-to-use, hand-held test instrument designed to generate an adjustable C-Level™ simulation signal.



Part Number	Description
1038326	C-Level™ Simulator

## 4-20mA SIMULATOR

Easy-to-use, hand-held test instrument designed to generate an adjustable 4-20mA signal from loop power.



Part Number	Description
1039199	4-20mA Simulator

## SUB-X™ TRANSMITTER

Submersible level transmitter with 4-20mA output.

- Available in 7.25 PSI (16.7 ftWC) and 14.5 PSI (33.4 ftWC) ranges
- Includes mounting bracket



Part Number	Description
1051995	Sub-X™ 16.7 ftWC with 25ft cable
1051993	Sub-X™ 16.7 ftWC with 50ft cable
1051992	Sub-X™ 16.7 ftWC with 75ft cable
1051991	Sub-X™ 16.7 ftWC with 100ft cable
1051996	Sub-X™ 33.4 ftWC with 25ft cable
1051989	Sub-X™ 33.4 ftWC with 50ft cable
1051990	Sub-X™ 33.4 ftWC with 75ft cable
1051994	Sub-X™ 33.4 ftWC with 100ft cable

## SIMPLEX INSTALLATION KIT

Provides easy weather-proof wire installation for simplex control panels.

Includes:

- 2" hub assembly
- 2" cord seal (seals 1-4 cables)
- ¾" hub assembly



Part Number	Description
1038029	Installation Kit, Simplex

## DUPLEX INSTALLATION KIT

Provides easy weather-proof wire installation for duplex control panels.

Includes:

- 2.5" hub assembly
- 2.5" cord seal (seals 1-6 cables)
- ¾" hub assembly



Part Number	Description
1038030	Installation Kit, Duplex

## HUB ASSEMBLY

Provides liquid-tight conduit attachment location.

- Available in ¾, 1, 1.5, 2 and 2.5 inch sizes.
- UL Listed and CSA Certified terminal adapter



**TERMINAL ADAPTER (HUB):** PVC

**GASKET:** neoprene

**LOCK NUT:** metal

Part Number	Description
1030564	¾ inch Hub Assembly
1009305	1 inch Hub Assembly
1008848	1.5 inch Hub Assembly
1008849	2 inch Hub Assembly
1037128	2.5 inch Hub Assembly

PRODUCTS CONTINUED ON NEXT PAGE.  
SEE PRICE BOOK FOR LIST PRICES.

  
**SJE RHOMBUS**  
 PO Box 1708, Detroit Lakes, MN 56502  
 1-888-DIAL-SJE • 1-218-847-1317  
 1-218-847-4617 Fax  
 email: customer.service@sjeinc.com  
[www.sjerrhombus.com](http://www.sjerrhombus.com) **H.5**

# CONTROL PANEL ACCESSORIES

Cord Seals, Hub Assembly, Simplex Installation Kit, Duplex Installation Kit, C-Level™ Simulator, 4-20mA Simulator, Sub-X™ Transmitter, Cable Connectors, Panel Mounting Post, and Riser Mounting Kit

## CABLE CONNECTORS

Provides strain relief and a liquid-tight seal.

- UL Listed and CSA Certified

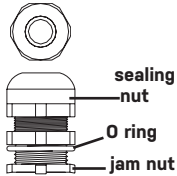


## ROUND CABLE SPECIFICATIONS

**MATERIAL:** polyimid flame-resisting, self-extinguishing plastic

**O RING:** neoprene plastic

**HOLE REQUIREMENT:** NPT threaded OR clearance holes (jam nut included)



### RCC-8

**NPT Hub:** .5 inch (1.27cm)

**Maximum Diameter:** .480 inch (1.22 cm)

**Minimum Diameter:** .270 inch (.68 cm)

**Wire/Cable (AWG) Accommodated:** 18/2, 18/3, 18/4, 16/2,

16/3, 16/4, 14/2, and 14/3

### RCC-12

**NPT Hub:** .75 inch (1.90 cm)

**Maximum Diameter:** .709 inch (1.80 cm)

**Minimum Diameter:** .545 inch (1.38 cm)

**Wire/Cable (AWG) Accommodated:** 14/2, 14/3, 14/4, 12/2,

12/3, 12/4, 10/2, and 10/3

### RCC-16

**NPT Hub:** 1.0 inch (2.54 cm)

**Maximum Diameter:** .98 inch (2.49 cm)

**Minimum Diameter:** .71 inch (1.80 cm)

**Wire/Cable (AWG) Accommodated:** Round cable with outside diameter within range identified above.

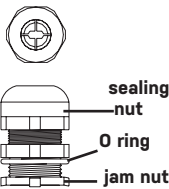
Part Number	Description
1002574	1/2 inch Round Cable Connector (RCC-8)
1002575	3/4 inch Round Cable Connector (RCC-12)
1009868	1 inch Round Cable Connector (RCC-16)

## FLAT UF CABLE SPECIFICATIONS

**MATERIAL:** weather-stabilized thermo plastic

**O RING:** neoprene plastic

**HOLE REQUIREMENT:** NPT threaded OR clearance holes (jam nut included)



### UFCC-8

**NPT Hub:** .50 inch (1.27 cm)

**Maximum:** .26 x .56 inch (.66 - 1.42 cm) slot

**Wire/Cable (AWG) Accommodated:** 14/2, 12/2, 10/2

### UFCC-12

**NPT Hub:** .75 inch (1.90 cm)

**Maximum:** .26 x .60 inch (.66 - 1.52 cm) slot

**Wire/Cable (AWG) Accommodated:** 14/3, 12/3

Part Number	Description
1002576	1/2 inch Flat UF Cable Connector (UFCC-8)
1002577	3/4 inch Flat UF Cable Connector (UFCC-12)

## PANEL MOUNTING POST

Provides easy installation of control panels.

- Removable front access door for easy wiring
- Can be mounted directly into ground, over a 4x4 post, or conduit for a quick, clean, easy installation
- Includes 4 stainless steel mounting bolts
- Includes drilling template
- Accommodates enclosures up to 14 x 12 x 6 inches (35.6 x 30.5 x 15.2 cm)



**POST:** Polyethylene (34 x 7 x 6 inches)

**BOLTS:** 4X rated stainless steel with gaskets

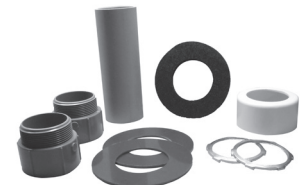
Part Number	Description
1038027	Panel Post Assembly

## RISER MOUNTING KIT

Secures panel mounting post to tank riser.

Includes:

- (2) hub assemblies
- PVC pipe and connecting hardware
- Conduit for routing pump and float from tank riser to post



unassembled



assembled

Part Number	Description
1038262	Riser Mounting Kit (2 inch)
1053756	Riser Mounting Kit (2.5 inch)

[www.sjrhombus.com](http://www.sjrhombus.com)  
[customer.service@sjeinc.com](mailto:customer.service@sjeinc.com)

**Call or fax your order!**

1-888-DIAL-SJE (1-888-342-5753) • Fax 218-847-4617

*Product offering and pricing are subject to change without notice.*

**H.6** Please visit [www.sjrhombus.com](http://www.sjrhombus.com) for the most current information.

9500123C

© SJE Rhombus 04/18