

PANEL MOUNTING POST

Provides Easy Installation
of Control Panels

- Removable front access door for easy wiring
- Can be mounted directly into ground, over a 4 x 4 post, or conduit for a quick, clean, easy installation
- Includes 4 stainless steel mounting bolts with gaskets and drilling template
- Accommodates enclosures with a minimum depth of 6" and maximum overall dimensions of 14 x 12 x 6 inches (35.6 cm x 30.5 cm x 15.2 cm), including SJE-Rhombus® 112, 115, TD, IFS Simplex and EZ Series® control panels



Shown here with an IFS panel.



SJE-
Rhombus®

PANEL MOUNTING POST

Provides Easy Installation of Control Panels

Function

The **Panel Mounting Post** is designed to make installing control panels easier. The post features a removable door for easy wiring. It can be mounted directly into ground, over a 4 x 4 post, or conduit for a quick, clean, easy installation. Accommodates enclosures with a minimum depth of 6" and maximum overall dimensions of 14 x 12 x 6 inches, including SJE-Rhombus® 112, 115, TD, IFS Simplex, and EZ Series® controls panels.

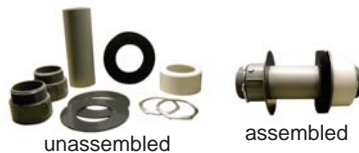
Features

- Includes 4 stainless steel mounting bolts with gaskets and drilling template
- Indents for anchoring to 4 x 4 post
- Rugged polyethylene construction

Accessories

Riser Mounting Kit

- Secures panel mounting post to tank riser.
- Includes: 2" hub assembly, 2" x 6" PVC pipe, connecting hardware and conduit.



Simplex Installation Kit

- Provides easy weather-proof wire installation for simplex control panels.
- Includes: 2" conduit hub assembly, 2" cord seal, 3/4" hub assembly.



Duplex Installation Kit

- Provides easy weather-proof wire installation for duplex control panels.
- Includes: 2.5" conduit hub assembly, 2.5" cord seal, 3/4" conduit hub assembly.



Models

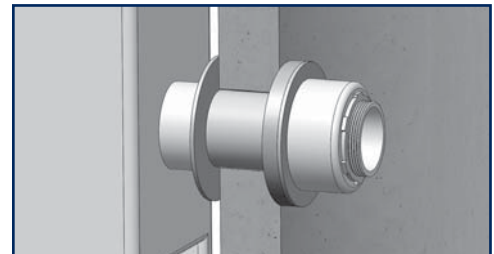
Description

- **1038027** Panel Post Assembly
- **1038262** Riser Mounting Kit
- **1038029** Simplex Installation Kit
- **1038030** Duplex Installation Kit



Installation Diagrams

Riser Mounting Kit



Simplex/Duplex Installation Kit

